

MRH PRIVATE RESIDENTIAL

LUXURY VILLA

Hittin, Riyadh, Kingdom of Saudi Arabia



BUILDING YOUR DREAMS

iMaker Group is a renowned architecture firm based in Dubai, United Arab Emirates. The Luxury Lifestyle Awards named them Best Architect in the category of Best Luxury Architecture (Single Residential Project) 2022. Architecture, interior design, and landscaping are among the services offered, with an emphasis on luxury living, exclusive bespoke design for clients, and the creation of luxurious spaces.

iMaker Group facilitates transactions by providing turnkey solutions. From concept through completion and handover, we'll take you through the entire process. We never fail to deliver when it comes to ideas and execution. Our architects, interior designers, and engineers are not only talented but also resourceful, providing practical solutions to difficult design requests and assuring the best possible outcome.

Creating designs in modern, contemporary, new classic, and even neo-futurist styles. If you can dream it, we can build it!



AHMAD REFAI
CO- FOUNDER

BARAA REFAI
CO- FOUNDER

About the Project
PAGE 5

Achitecture & Landscape
PAGE 6

Interiors

Basement
PAGE 18

Ground Floor
PAGE 50

First Floor
PAGE 72

Second Floor
PAGE 110



ABOUT THE PROJECT

We must consider building an estate that emanates opulence and shines out from afar while dazzling in awe up close. The estate is located in Riyadh, Saudi Arabia's Hittin district, a prestigious location. The design philosophy is heavily influenced by classicism. This new classic mansion is the epitome of a classic that has withstood the test of time.

The estate represents the characteristics of its owner, strong and proud. This grand estate is a three-story villa, excluding the basement and rooftop, with 2,767.50 square meters of land. The massive structure and lush flora around the estate will astound you as soon as you enter. The courtyard is a haven for weary eyes, calming and soothing in all directions. The estate's amenities include a pool, gym, gaming area, 6 parking spaces in the basement and 4 parking spaces on the ground. The interior arrangement includes 17 baths and washrooms, 4 kitchens, 7 bedrooms for family and guests, 3 dining rooms, 6 living rooms, and 8 walk-in closets, all of which are evenly spread throughout each storey.



Facade



Facade



Facade



ARCHITECTURE & LANDSCAPE

The architectural and landscape influences are a combination of different classical design principles to create a one-of-a-kind but familiar framework that exemplifies its timeless quality. The windows on the villa's façade stretch from the ground to the third story. Increasing the amount of light and air that enters the estate.

The surrounding area is surrounded by lush, with greenery strategically placed to enhance the estate's appearance while also providing shade from the exterior and interior. The sitting area in the courtyard is well-spaced to provide plenty of room to take in the scenery. Our interior design manager handpicks all accessories and furniture to match the structure's style and the owners' tastes. Each patio has its own sitting space, so you can enjoy and relax with nature no matter where you are in the house. If you want complete shade, there is also a sunken garden encircling the property. This estate is a shining example of luxury that exudes from every pore and leaves plenty to be desired.

Entrance



Entrance

Developer & Designer
iMaker Group

Builder
iMaker Construction

Plot Area	Basement	Ground Floor	First Floor	Second Floor	3 Storey Villa
2676.50 SQM	2063.84 SQM	1234.32 SQM	1121.26 SQM	526.04 SQM	

Amenities

-  17 Washrooms & Restrooms
-  4 Kitchen Area
-  7 Bedroom
-  8 Walk-in Closet
-  Outdoor Sitting Area (Courtyard)
-  3 Dining Area
-  6 Living/ Sitting Area
-  6 Parking Area
-  Swimming Pool
-  Game Room
-  Gym



LIVE A PRISTINE LIFE



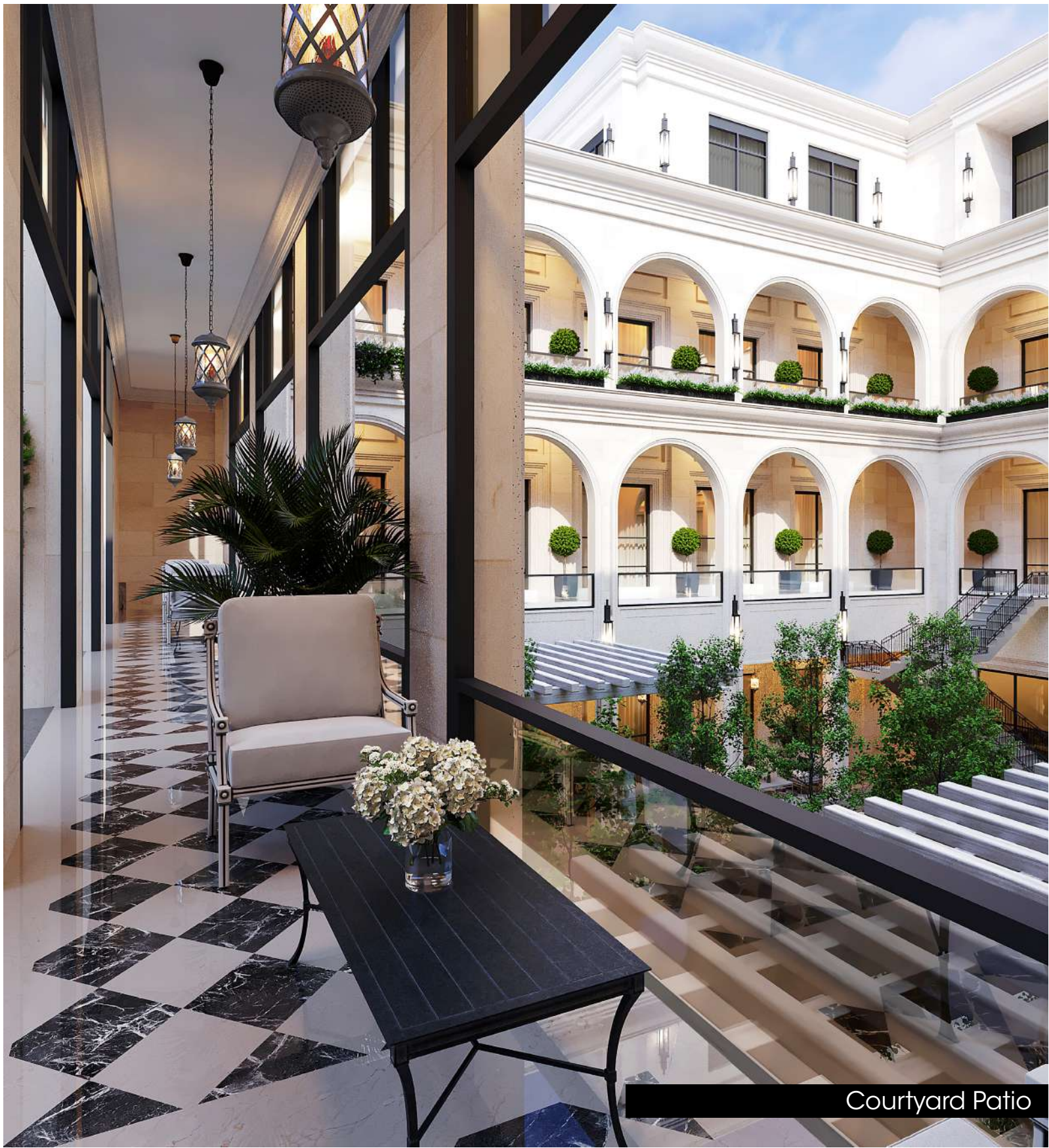
Eminating with opulence from exteriors to the interiors.



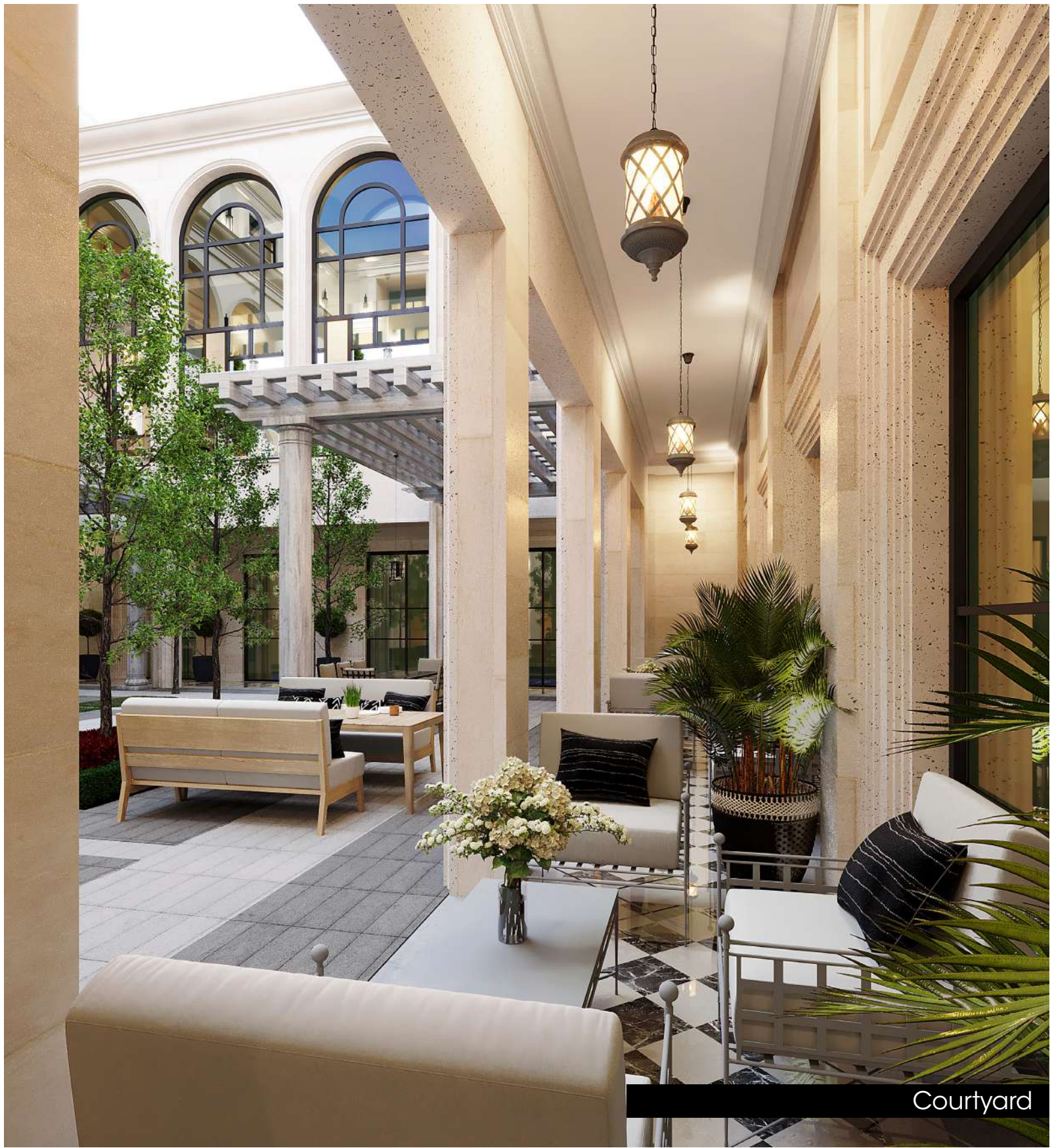
Estate Birds Eye View



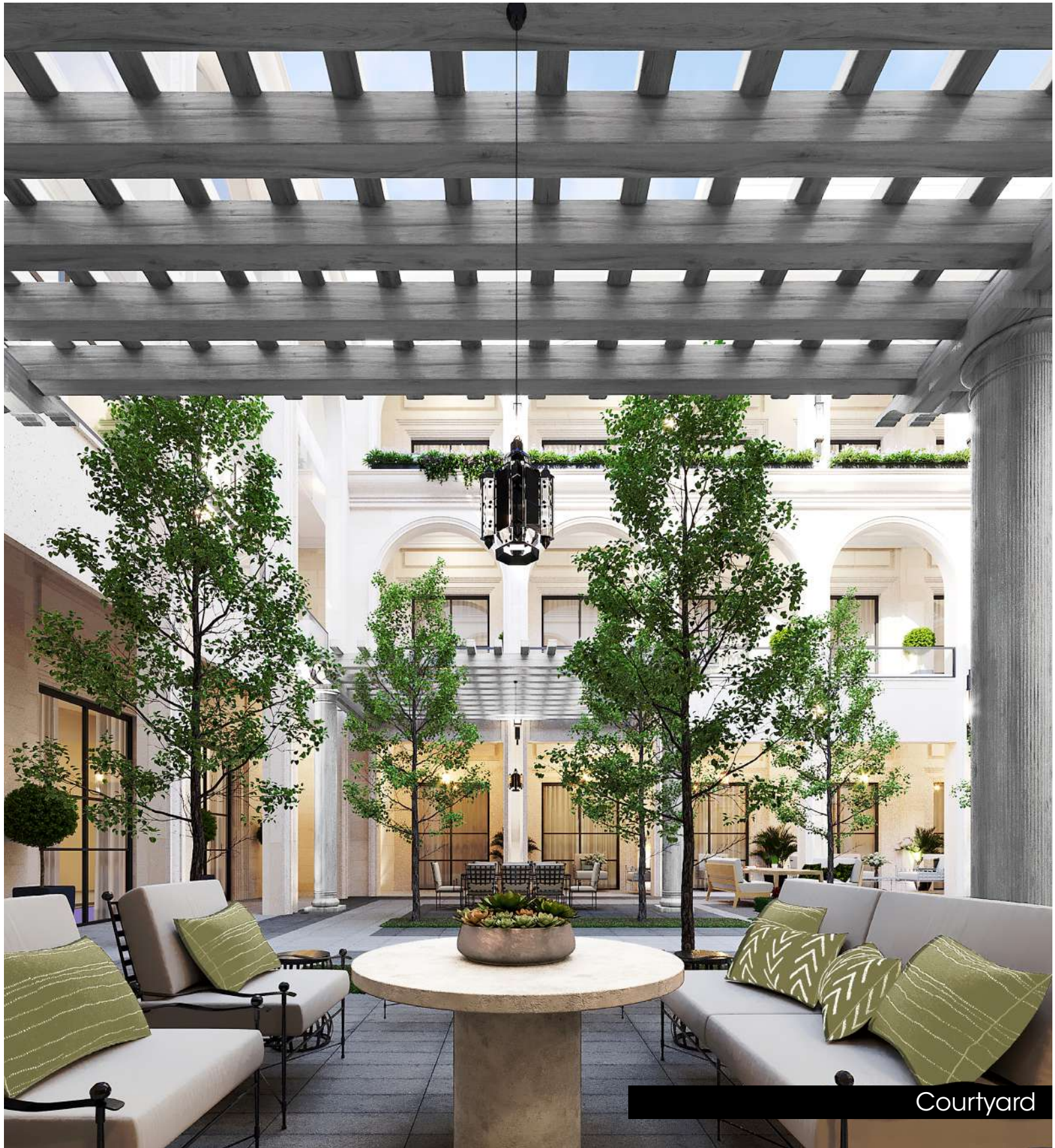
Outside Sitting Area



Courtyard Patio



Courtyard







Sunken Sitting Area

INTERIOR DESIGN

All high-end interiors place a premium on components that provide a high level of comfort, quality, intricacy, and elegance. Luxe design appeals to people because of its sophisticated appearance. Luxury isn't a matter of where you live. It's more of a mental condition, a concept of living the best life possible. It is the sense of style that counts, not the size. When high-end interior design is done well, even the tiniest studios can amaze with elegance. A well-executed high-end interior design must place a strong emphasis on quality. It shouldn't, however, veer too far from the user's own personality.

BASEMENT LAYOUT



GUEST AREA
PAGE 22 - 28

OFFICE
PAGE 30 - 31

GAMING ROOM
PAGE 32 - 33

FAMILY LIVING ROOM
PAGE 34 - 35

GYM
PAGE 36

LOCKER ROOM / FACILITIES
PAGE 37

GUEST SITTING AREA
PAGE 38 - 39

GUEST ENTRANCE
PAGE 42 - 43

GUEST KITCHEN HALL
PAGE 44 - 45

GUEST DINING ROOM
PAGE 46 - 47

SWIMMING POOL
PAGE 48



BASEMENT

The basement is always portrayed as dark, muddy, and wet and frequently terrifying in horror films. This cliché was very popular in the late 20th century. This is far from the truth. If you use the space wisely, especially if you have a large basement, you may turn it into something spectacular to impress your guests and family members.

While the estate's exterior is heavily influenced by new classic style, the interior is a mix of contemporary and new classic. We enjoy developing one-of-a-kind designs that are far from typical but exude luxury. Adding a pop art accessories may seem out of place in a classic design, but knowing when and where to use them creates an opulent atmosphere and provides additional value to your total interior design.



Guest Area Entrance Hall



Guest Area Entrance



Guest Area Sitting Area



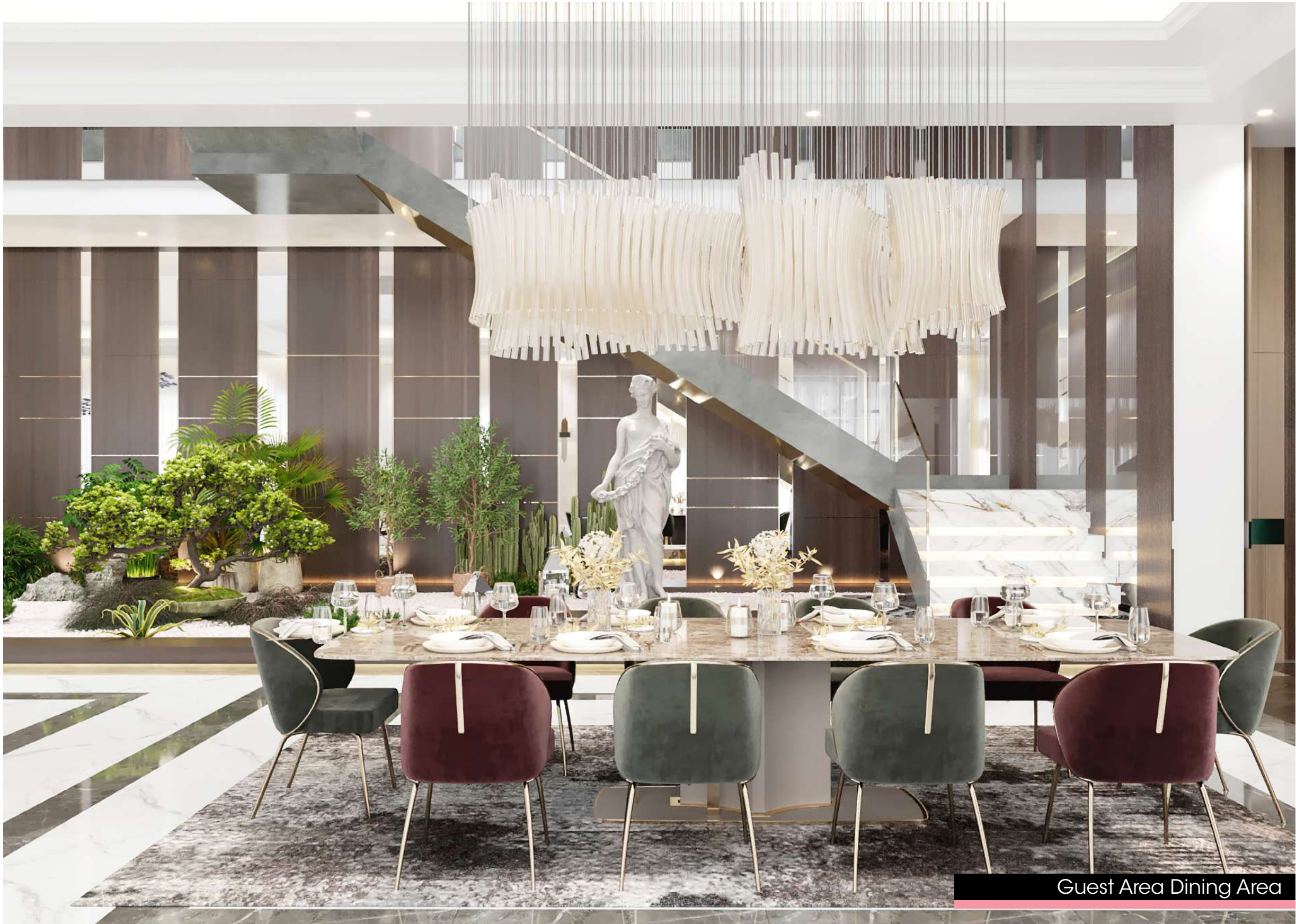
Guest Area Sitting Area



Guest Area Sitting Area



Guest Area Dining Area



Guest Area Dining Area



Guest Area Open Kitchen

Good design
doesn't date





Home Office



Game Room



Game Room

FUN TIME!

A room to relax is not just a place to slouch but a place where you could disengage with the world for sometime and just have some fun.



Family Seating Area



Family Seating Area



Gym Area



Gym Locker Room & Facility



Guest Seating Area



Guest Seating Area







Guest Entrance



Guest Entrance







Guest Dining Room



Guest Dining Room

BELLE MÉMOIRE

Make a lasting impact on your guests, and the best way to do so is to fill them with wonderful memories. Creating guest areas that can accommodate a big number of people while being pleasant. To have a good time while staying at or visiting your place. The use of pastels in conjunction with neutral colors enhances the space even more. Other guest areas might be used to commemorate special occasions with both guests and family. Using neutral and pastel colors may appear simple, but it is actually rather sophisticated, especially if you know how to use them to highlight the surrounding elements such as lighting, furniture, and fixtures. Element such as emerald green adds to the sumptuous sense.

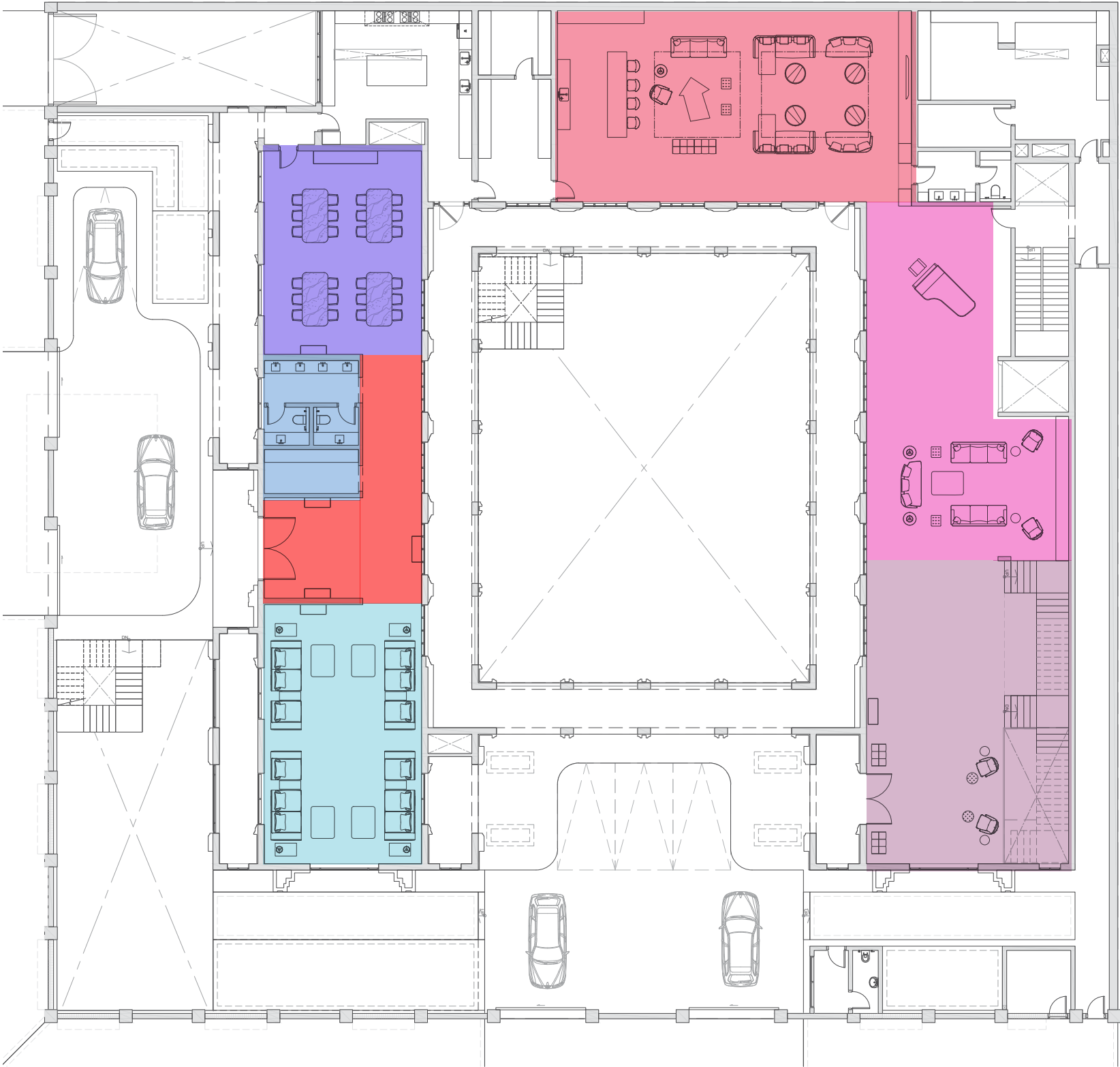


Indoor Swimming Pool

LIVING A LIFESTYLE

It's all about comforts and luxury living for wealthy households. Real luxury living combines the comforts of home with the amenities, elegance, and peace of mind of a hotel. True pleasure and fulfillment are what luxury is. It's the sensation you have when you wake up slowly in a cozy bed and take in your beautifully decorated space. Luxury is living in luxury. It's a place where you're constantly reminded to appreciate the lovely things in life.

GROUND FLOOR LAYOUT



- GUEST ENTRANCE**
PAGE 51 - 52
- GUEST LIVING ROOM**
PAGE 53 - 54
- GUEST DINING ROOM**
PAGE 55 - 57
- GUEST WASHROOM**
PAGE 58 - 59

- FAMILY LIVING ROOM**
PAGE 60 - 63
- FORMAL AREA**
PAGE 64 - 68
- FAMILY ENTRANCE**
PAGE 69 - 70



Guest Entrance



Guest Entrance



Guest Living Room



Guest Living Room



Guest Dining Room



Guest Dining Room



Guest Dining Room



Guest Washroom



Guest Restroom

CREATING A COHESIVE SPACE

When the entryway, kitchen, dining area, and living room all flow together in a smooth manner, continuity and creating a sophisticated spatial design are essential.

Two or more rooms are integrated in an open concept floor design to form a large, shared space. This is usually accomplished by removing the walls that used to separate the kitchen, dining room, and main living space. These separate sections come together to form an unified great room designed for entertaining and spending quality time with visitors or family members. This appealing, modern approach to space design is becoming increasingly popular.



Family Living Area



Family Living Area



Family Living Area



Family Open Kitchen



Formal Area



Formal Area



Formal Seating Area



Formal Seating Area



Formal Seating Area



Family Entrance

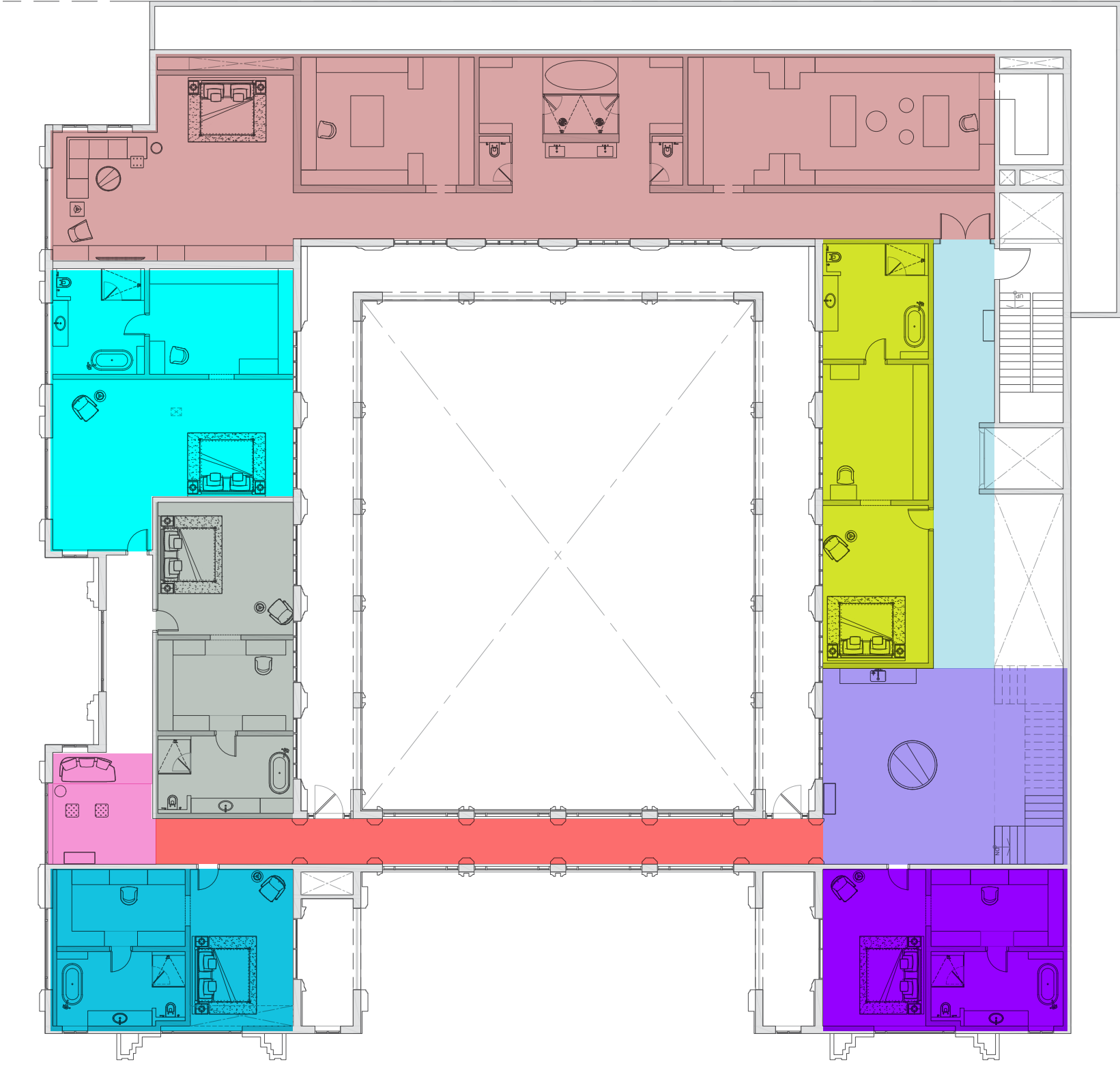


Family Entrance

ELEGANCE IN EVERY CORNER

Pristine, understated, and sophisticated. This is how you greet guests with a magnificent entryway. Plants and accessories strategically arranged throughout the space make it more welcoming and tranquil. The guests will undoubtedly be at ease and impressed.

FIRST FLOOR LAYOUT



- MASTER ROOM AREA**
PAGE 74 - 87
- HALLWAY**
PAGE 88
- HALLWAY**
PAGE 88
- STAIRCASE AREA**
PAGE 89
- SEATING ROOM**
PAGE 90 - 91

- BOY BEDROOM 1**
PAGE 94 - 96
- BOY BEDROOM 2**
PAGE 98 - 99
- GIRL BEDROOM 1**
PAGE 100 - 103
- GIRL BEDROOM 2**
PAGE 104 - 105
- GIRL BEDROOM 3**
PAGE 106 - 108

Real **comfort**,
visual and
physical, is
**vital to every
room.**



Master Bedroom



Master Bedroom



Master Bedroom



Master Bedroom Seating Area



DETAILS

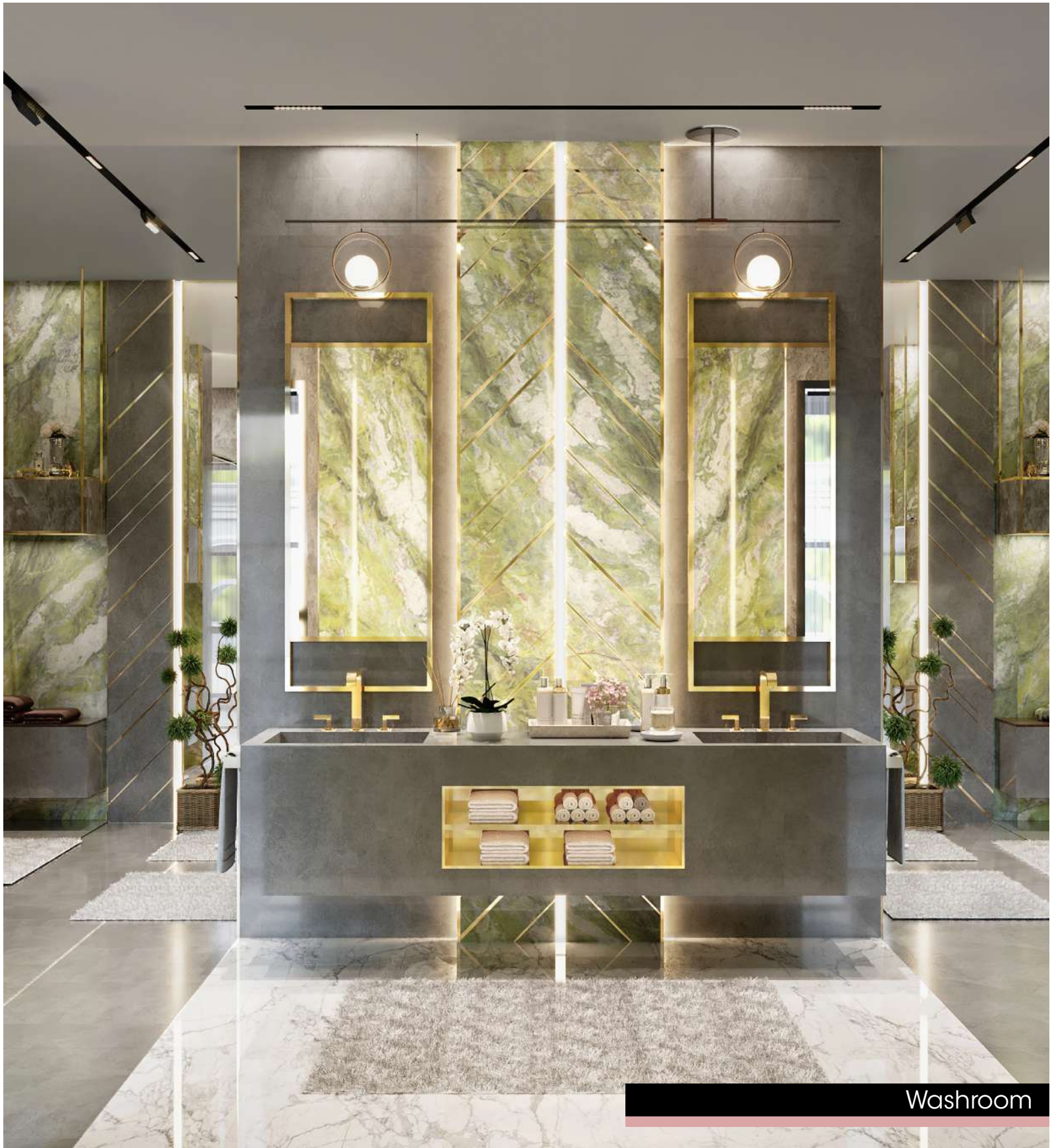
Don't be frustrated if finding the correct elements to add to a room's design takes the longest part of your designing effort. Take your time and be patient because a hasty job will frequently leave your room looking and feeling incomplete. A room's design details are similar to the sprinkles on a bowl of ice cream. The ice cream is delicious on its own, but with sprinkles, it's much better!

LUMINANCE

Lighting that is strategically placed gives a new depth to a space, bringing an interior design idea to life. Great lighting adds depth and height, creates cozy nooks, and highlights your most outstanding features. It's all about finding the right combination of light and shade and infusing a room with new life.



Restroom





Male Walk-in Closet

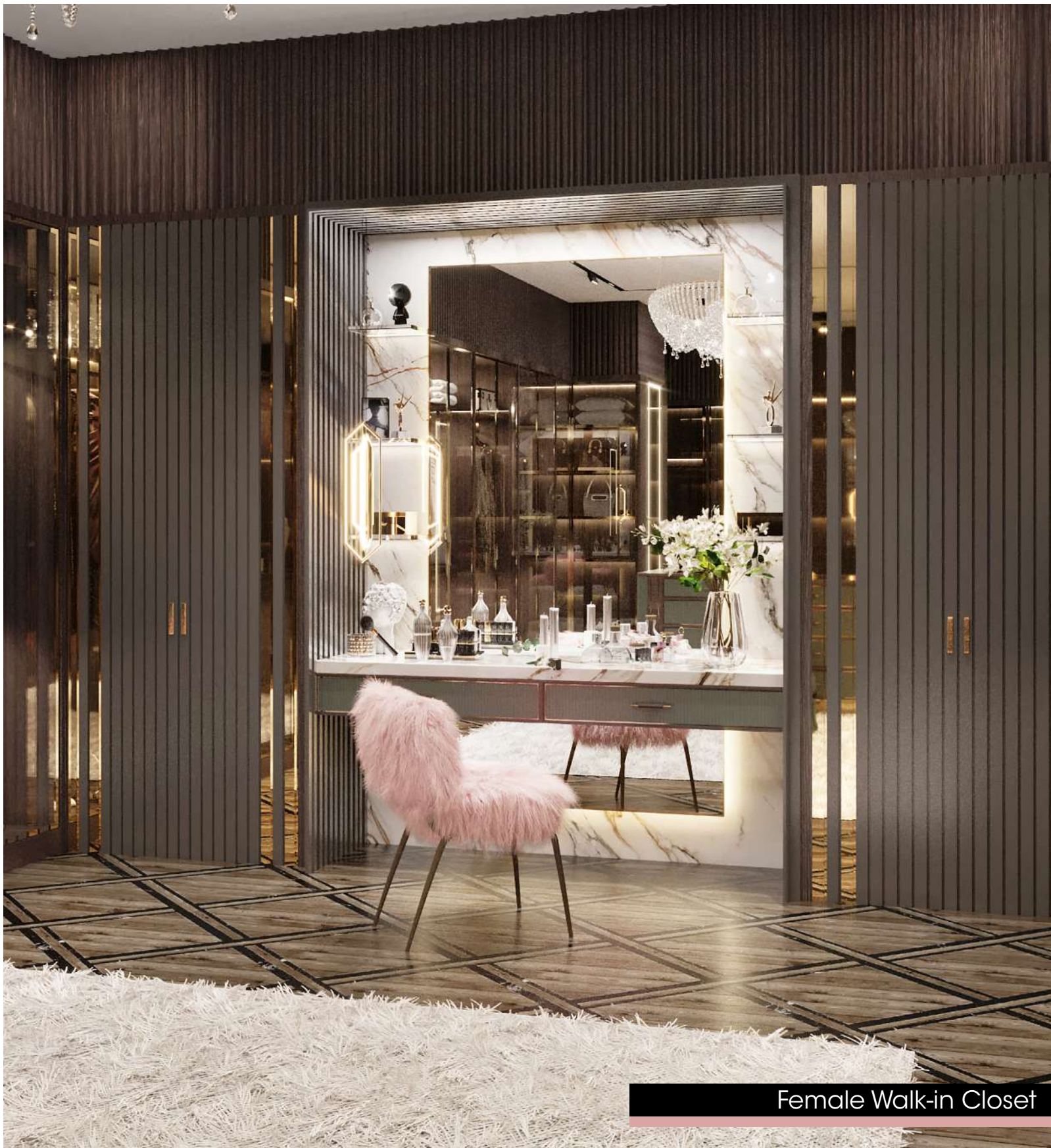


Male Walk-in Closet



Male Walk-in Closet





Female Walk-in Closet

HOME HARMONY

Harmony is the sense that all of the elements of your design fit together. They may fit the same theme, aesthetic style or mood. The important takeaway is that each distinct piece seems to belong together in some way, even if it is not identical to anything else.

Unity refers to the repetition of particular elements throughout your design — whether they're colors, shapes or materials — to pull the look together.

These principles are used to create a sense of cohesion in the space. Using harmony and unity to create a sense of cohesion makes that initial pattern recognition easy.



Female Walk-in Closet





Staircase Area



Seating Area



Seating Area





My
bedroom
is my
sanctuary.



Boys' Bedroom 1



Boys' Bedroom 1 Washroom

FORTY WINKS

Bedrooms are the major location of relaxation, where we all retire to get a good night’s sleep and renew ourselves, away from the stresses of the world. The colors used on the walls, rugs, and bed set are the first thing that people notice, thus they must all be soothing pastel colors to produce a peaceful impact.

Anyone who wants to unwind at the end of the day requires a bedroom that can help them relax and relieve stress. You will have a more peaceful and happy existence if you have a well-decorated bedroom since you will wake up energized and relaxed after a good night’s sleep.





Boys' Bedroom 2



Boys' Bedroom 2



Girls' Bedroom 1



Girls' Bedroom 1



Girls' Bedroom 1



Girls' Bedroom 1

PASTEL

Pastel colors can be described as calm and impartial. They can be characterized by calmness and neutrality. The design can be based on pastel hues, but they can also be employed as accents.

Designers describe pastel colors as “graceful.” They complement other colors beautifully and go in with any interior design style. Additionally, a bright pastel color scheme offers calming effects and encourages relaxation and focus. It’s useful for both working and de-stressing before bed.



Girls' Bedroom 2



Girls' Bedroom 2



Girls' Bedroom 3



Girls' Bedroom 3

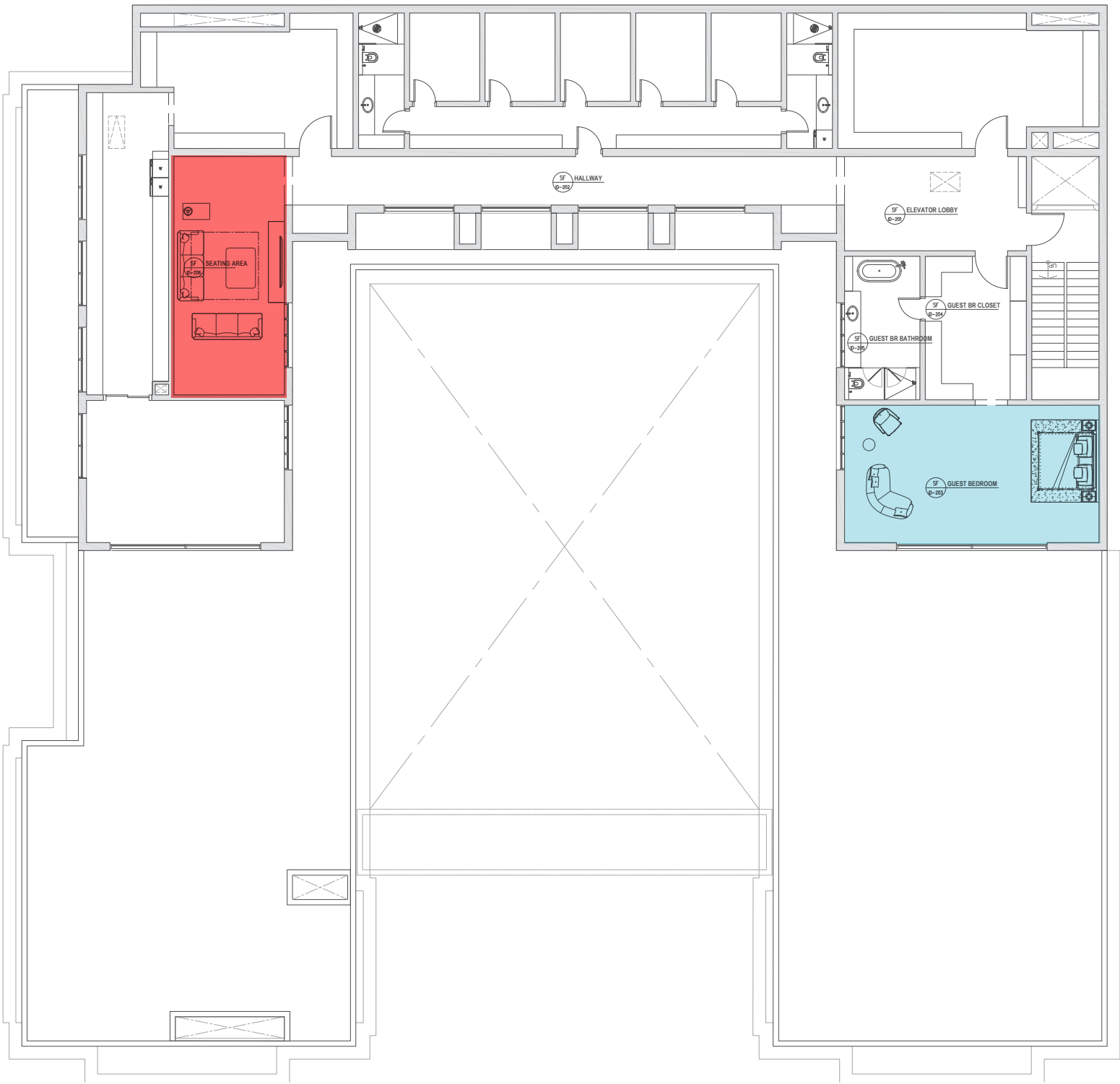


Girls' Bedroom 3

A MODERN LUXURY LIVING.

One of the most important aspects of any villa is its overall design – in terms of architecture, landscaping, interior design, etc. – all of these forces combine to create the best luxury villas are certainly a sight to behold, with a distinct personality expressed in the structure's overall look, from its exterior to its interiors.

SECOND FLOOR LAYOUT



- SEATING AREA
PAGE 112
- GUEST BEDROOM
PAGE 114 - 115





Seating Area

NEUTRAL

For a stylish and classy effect, layer several tones of the same color. Neutral colors are far from boring. Choosing a neutral design scheme has various advantages. They can serve as a color canvas, allowing you to experiment more freely with brighter, more vibrant materials and accessories. Alternatively, using brighter neutrals offers your space a more open, clean, and airy feel. Muted or darker neutrals can make a room feel nicer while yet being sleek. Neutrals appeal to people because they are soothing and refreshing.



Guest Bedroom



Guest Bedroom's Seating Area



SCAN ME

sales@imaker-group.com

32 Marasi Drive, Business Bay
Dubai, United Arab Emirates

www.imaker-group.com