



SMN PRIVATE RESIDENTIAL  
**LUXURY VILLA**

Nad Al Sheba, Dubai, UAE







# BUILDING YOUR DREAMS

iMaker Group is a renowned architecture firm based in Dubai, United Arab Emirates. The Luxury Lifestyle Awards named them Best Architect in the category of Best Luxury Architecture (Single Residential Project) 2022. Architecture, interior design, and landscaping are among the services offered, with an emphasis on luxury living, exclusive bespoke design for clients, and the creation of luxurious spaces.

iMaker Group facilitates transactions by providing turnkey solutions. From concept through completion and handover, we'll take you through the entire process. We never fail to deliver when it comes to ideas and execution. Our architects, interior designers, and engineers are not only talented but also resourceful, providing practical solutions to difficult design requests and assuring the best possible outcome.

Creating designs in modern, contemporary, new classic, and even neo-futurist styles. If you can dream it, we can build it!



AHMAD REFAI  
CO- FOUNDER

BARAA REFAI  
CO- FOUNDER

About the Project  
PAGE 5

Interiors

*Ground Floor*  
PAGE 7

*First Floor*  
PAGE 56





# ABOUT THE PROJECT

United Arab Emirates is a nation where tradition and modernity coexist. The project is situated in Nad Al Sheba, Dubai, which is known for its avant-garde and cutting-edge architecture.

The client desires a classic and modern blend, inspired by contemporary life. The combined built-up area of the first floor and ground floor of this luxurious home is 1,742.13 square meters. A modern discipline was used to build the interior spaces. The client's requirements are carefully studied and hand-selected while choosing the furnishings, fixtures, and lighting. The interior layout is evenly spread over each storey and includes eight bathrooms and washrooms, one kitchen, ten bedrooms for family and guests, three dining rooms, six living rooms, and five walk-in closets.



**DEVELOPER & DESIGNER**  
iMaker Group

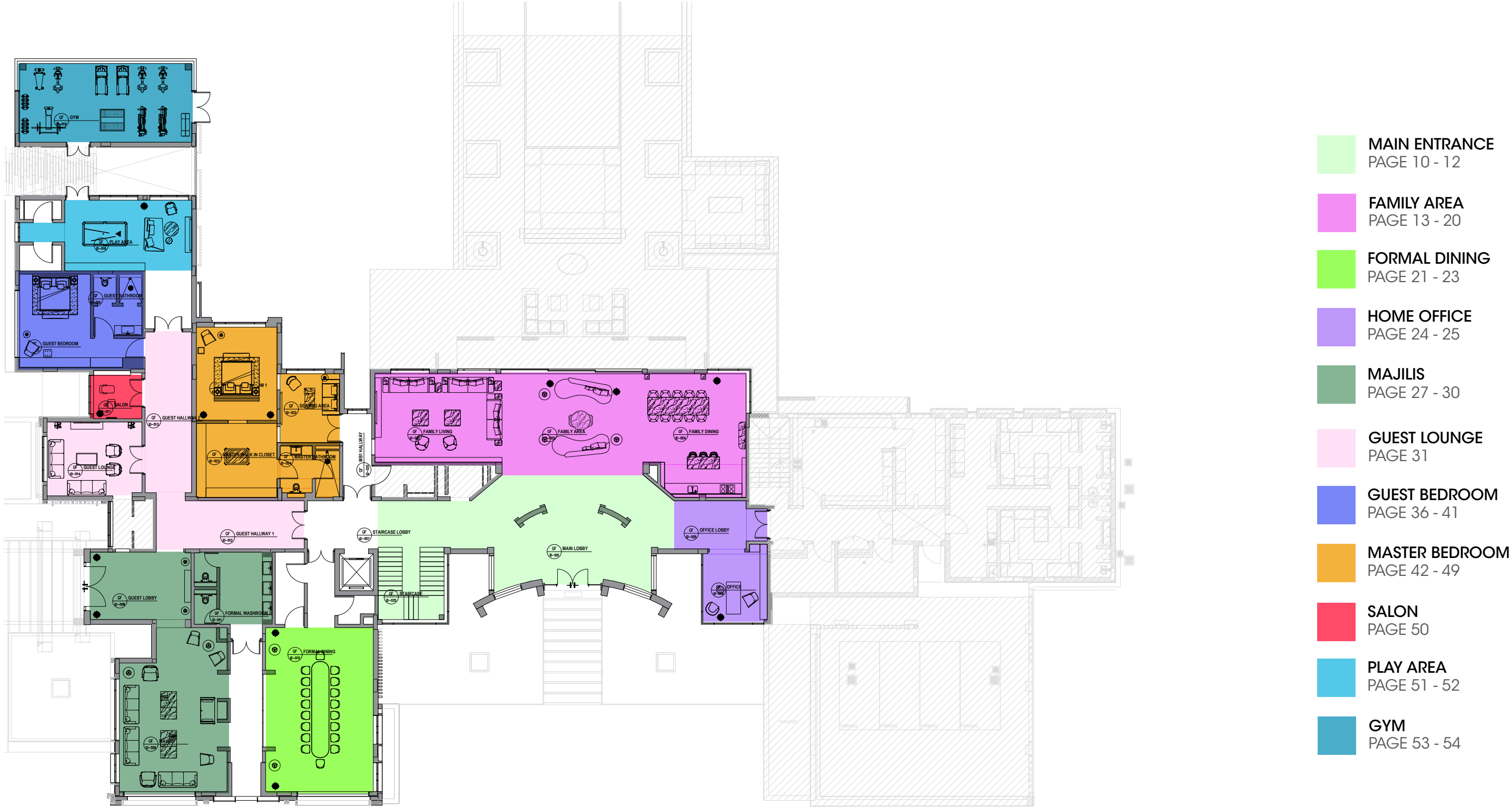
Plot Area	Ground Floor	First Floor
2241 SQM	1003.6 SQM	738.53 SQM

**Amenities**

-  8 Washrooms  
& Restrooms
-  1 Kitchen  
Area
-  10 Bedroom
-  5 Walk-in  
Closet
-  3 Dining  
Area
-  6 Living/  
Sitting Area
-  Game  
Room
-  Gym



GROUND FLOOR LAYOUT





# INTERIOR DESIGN

All high-end interiors place a premium on components that provide a high level of comfort, quality, intricacy, and elegance. Luxe design appeals to people because of its sophisticated appearance. Luxury isn't a matter of where you live. It's more of a mental condition, a concept of living the best life possible. It is the sense of style that counts, not the size. When high-end interior design is done well, even the tiniest studios can amaze with elegance. A well-executed high-end interior design must place a strong emphasis on quality. It shouldn't, however, veer too far from the user's own personality.

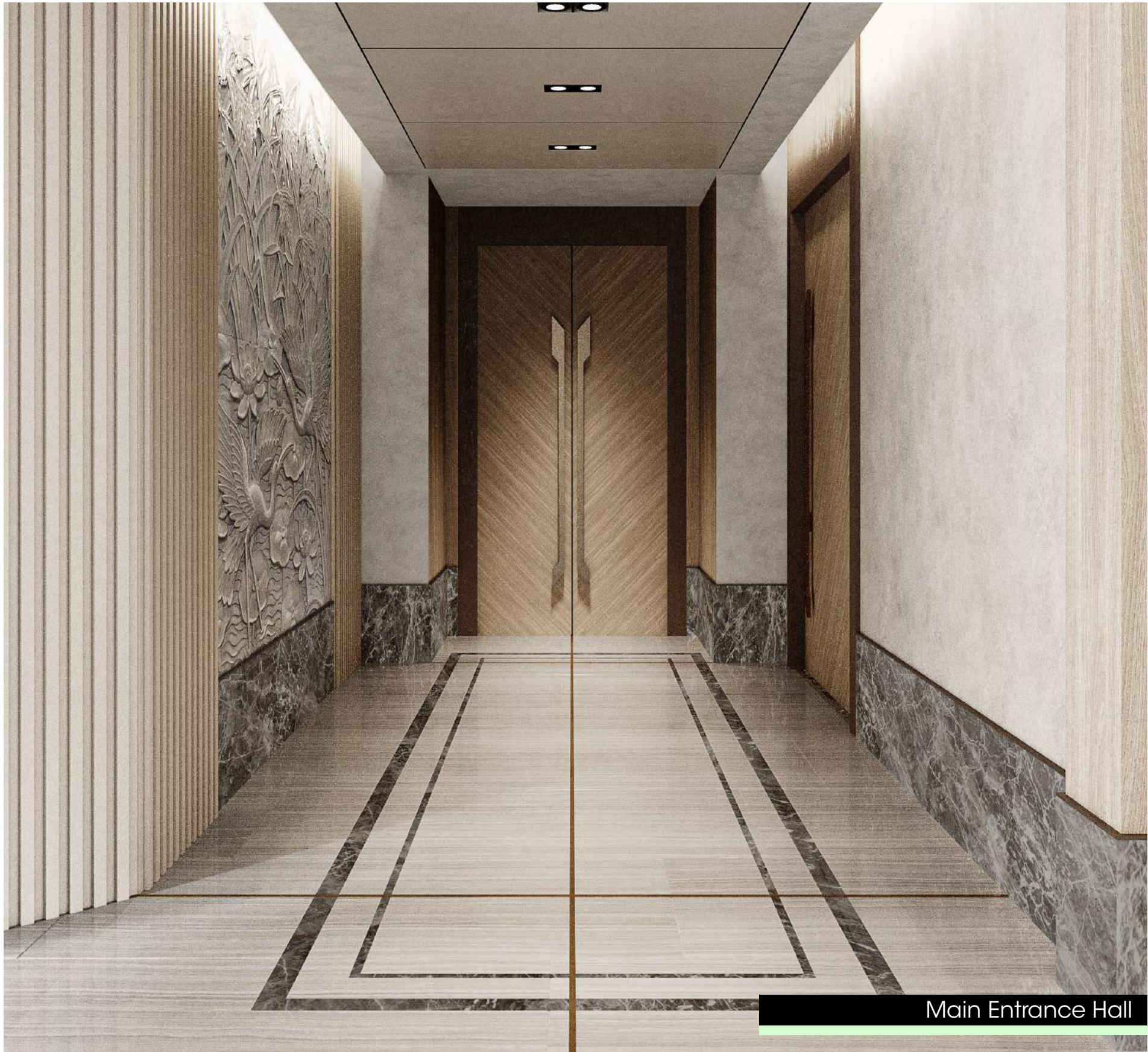












Main Entrance Hall





Main Entrance Hall Staircase





Family Living Area













Family Living Area

# BELLE MÉMOIRE

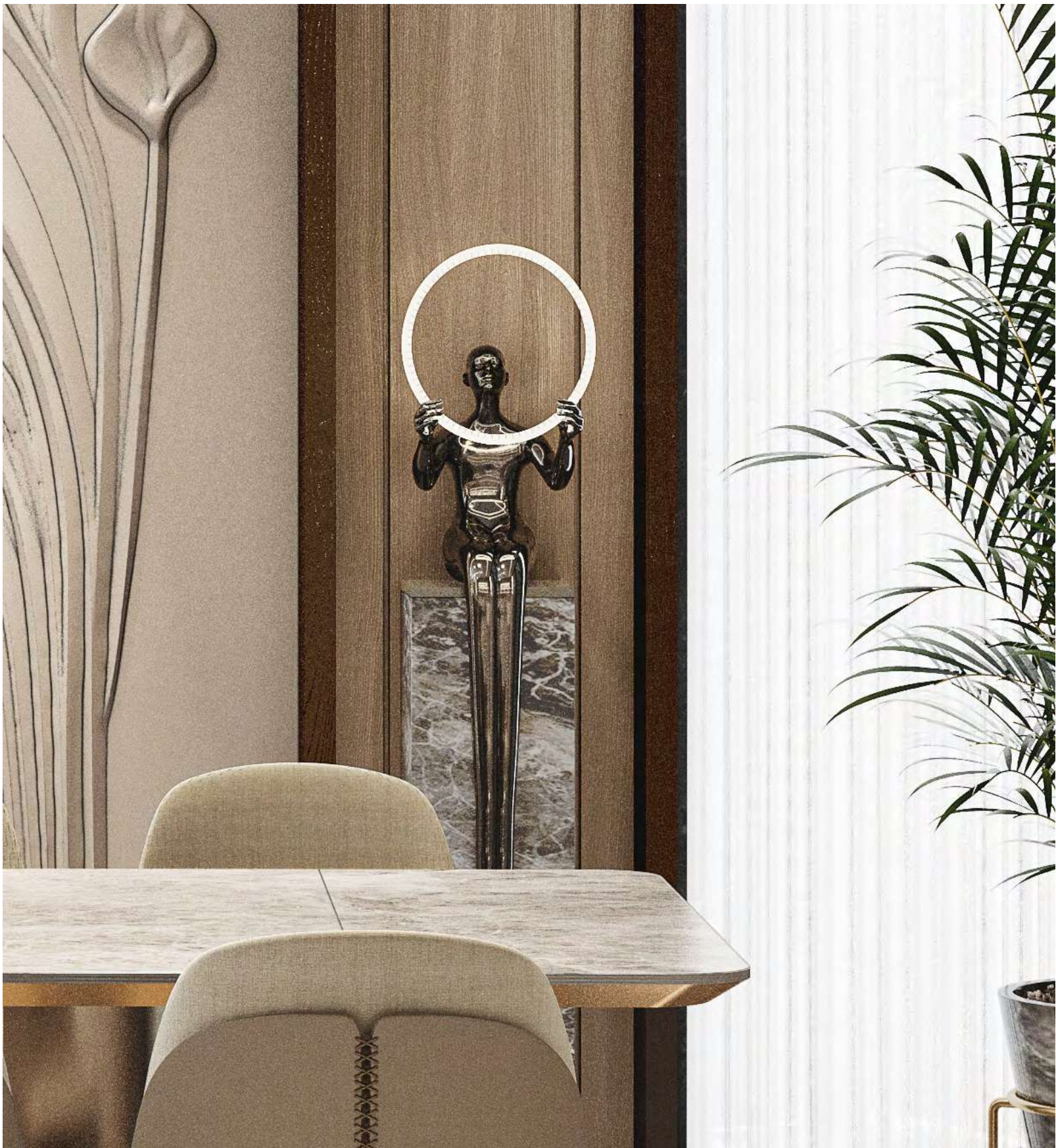
Make a lasting impact and the best way to do so is to fill them with wonderful memories. The use of contrasting colors in conjunction with neutral colors enhances the space even more. The colors bring sophistication, especially if you know how to use them to highlight the surrounding elements such as lighting, furniture, and fixtures.





Family Seating Area













Family Kitchen Area





Formal Dining





Formal Dining





Formal Dining





Home Office





Home Office

















Majilis Washroom & Restroom





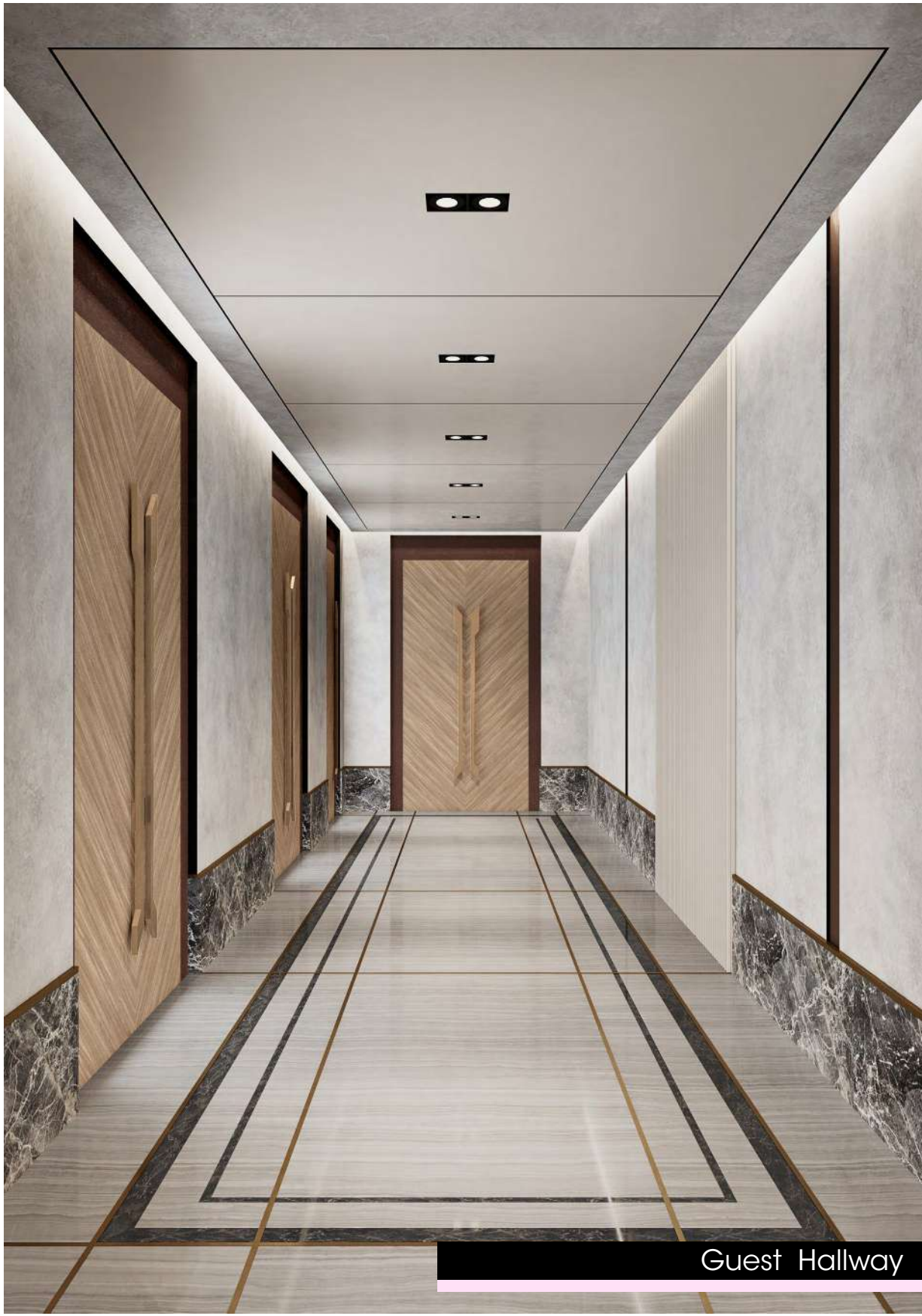


Majilis Hallway

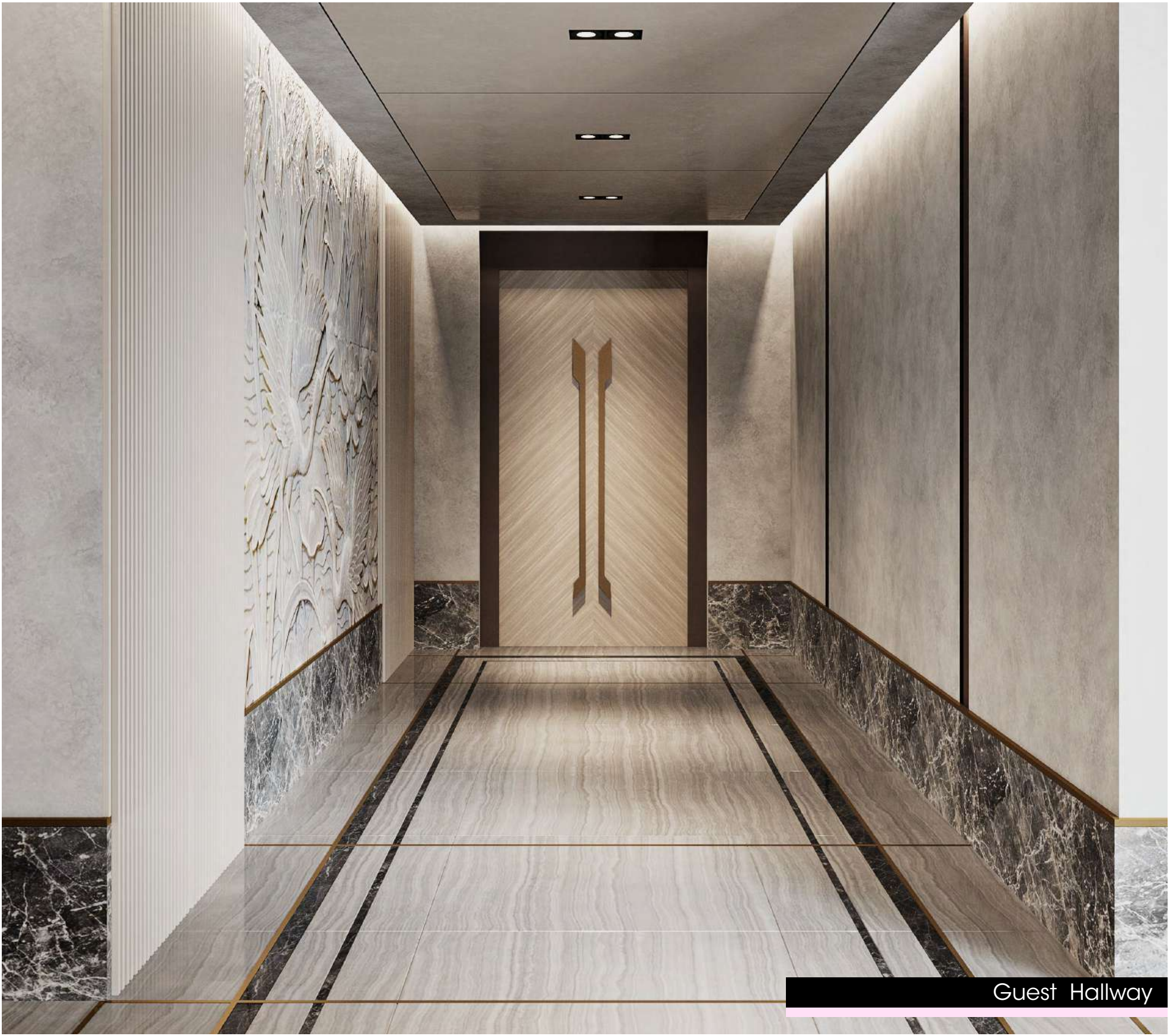


Majilis Hallway





Guest Hallway



Guest Hallway





Guest Lounge





Guest Lounge

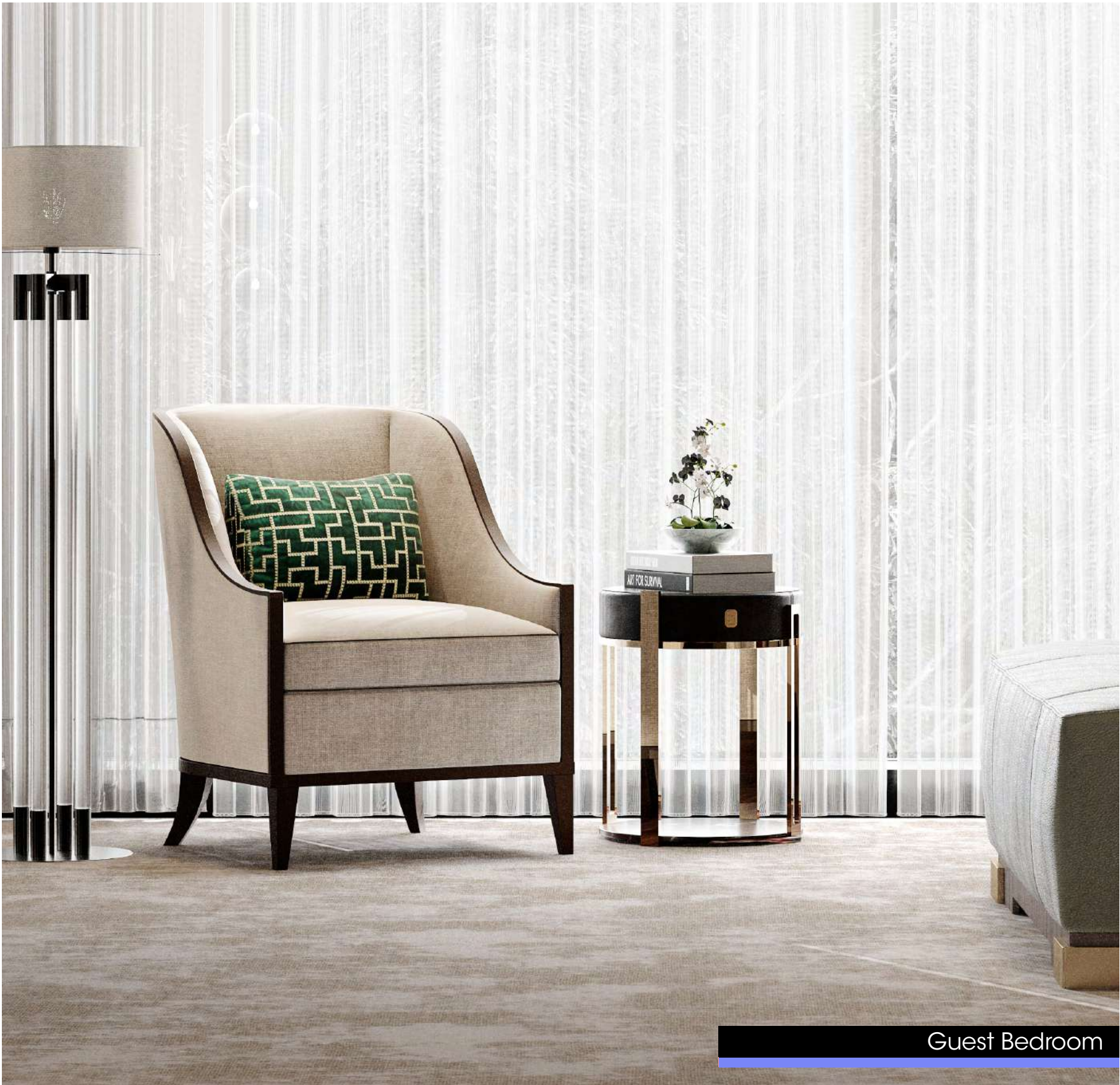












Guest Bedroom





Guest Bedroom



# HARMONY

When it comes to interior design, it should undoubtedly convey your personality at first glance. We customize our creative ideas to meet your lifestyle and requirements.





Guest Bedroom





Guest Bedroom Washroom





# LUXURIOUS SANCTUARY







Master Bedroom





Master Bedroom





Master Bedroom

**GOOD DESIGN**  
**DOESN'T DATE**









Walk-in Closet





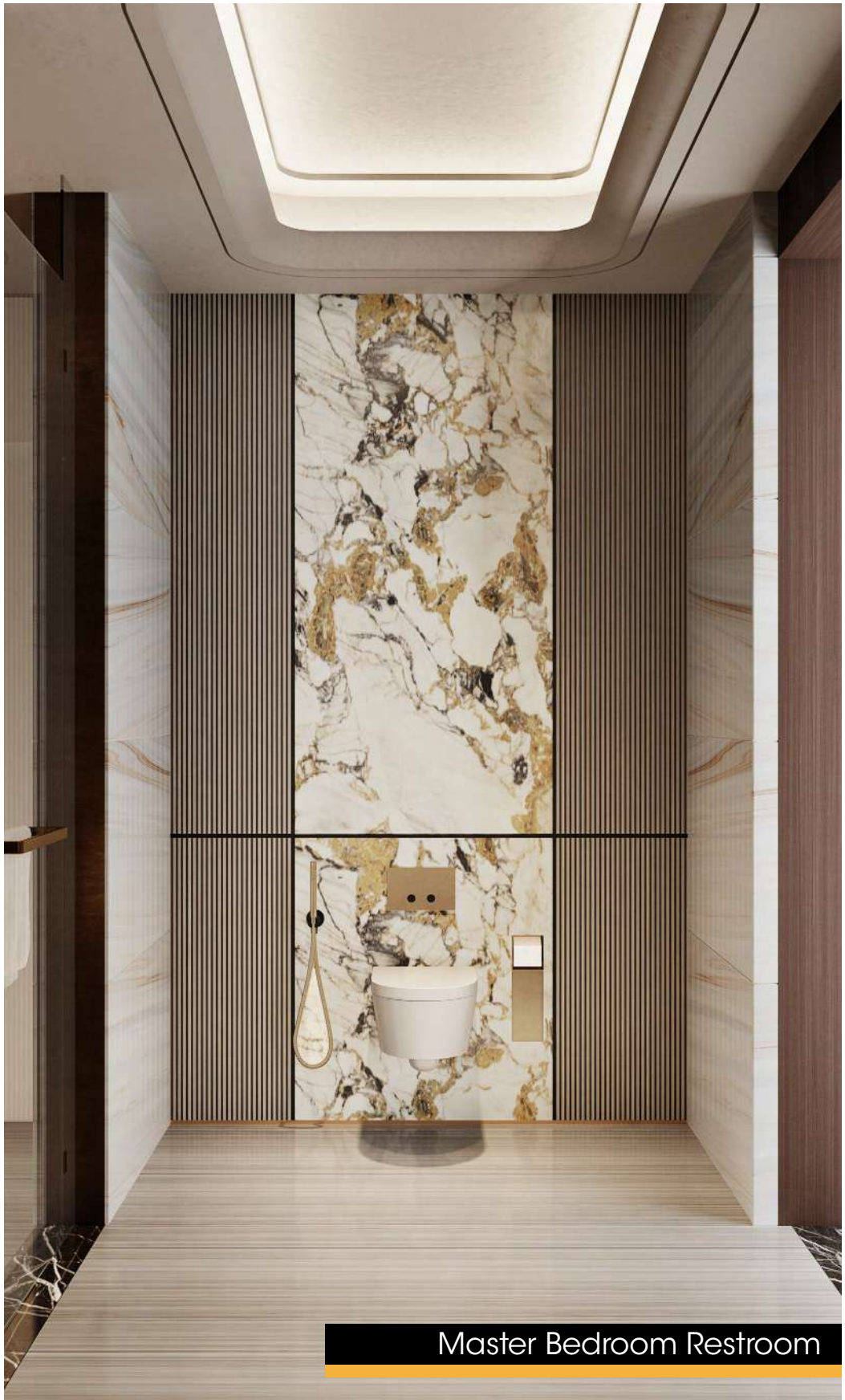
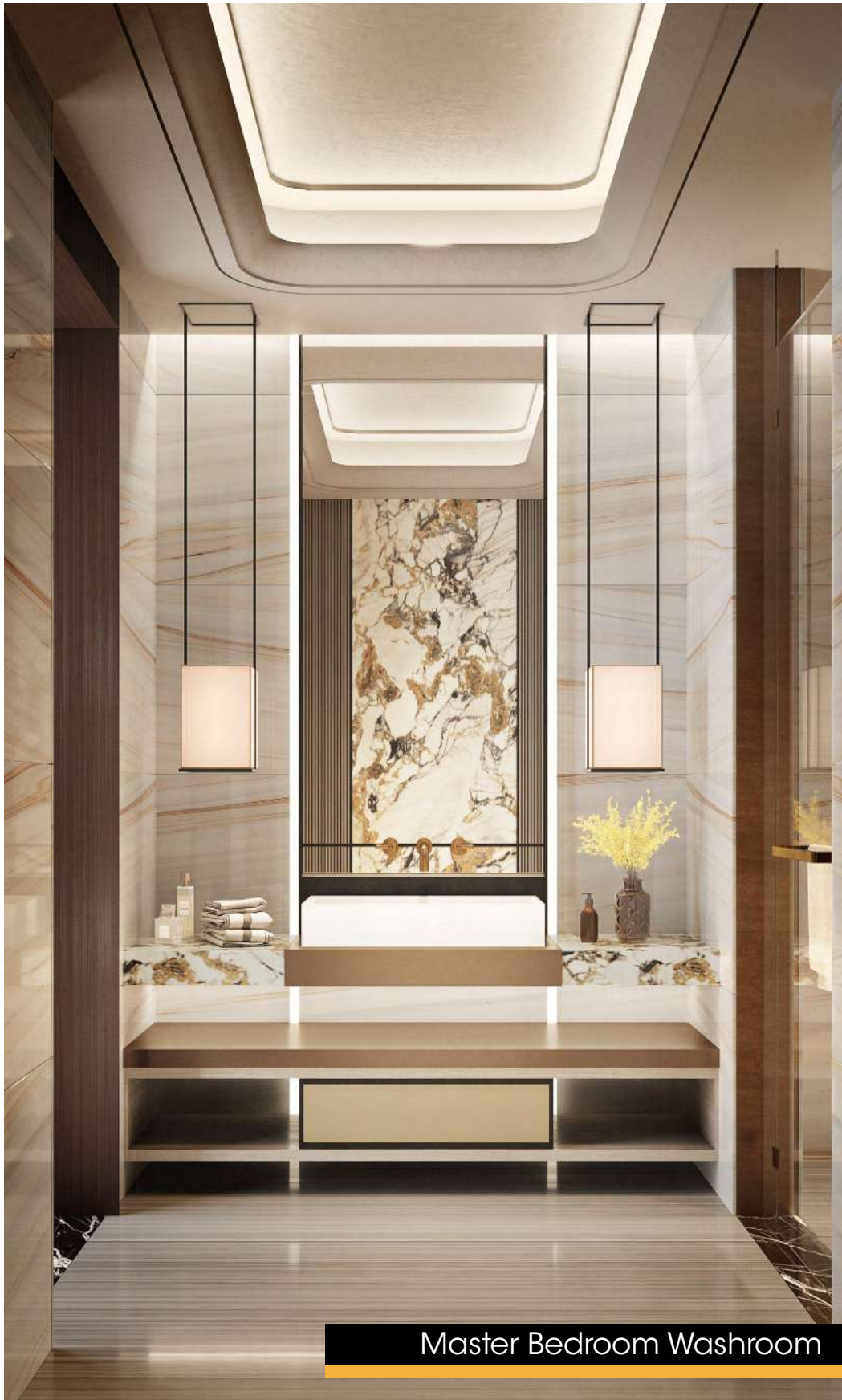
Walk-in Closet





Walk-in Closet













Play Area





Play Area





Gym Area





Gym Area

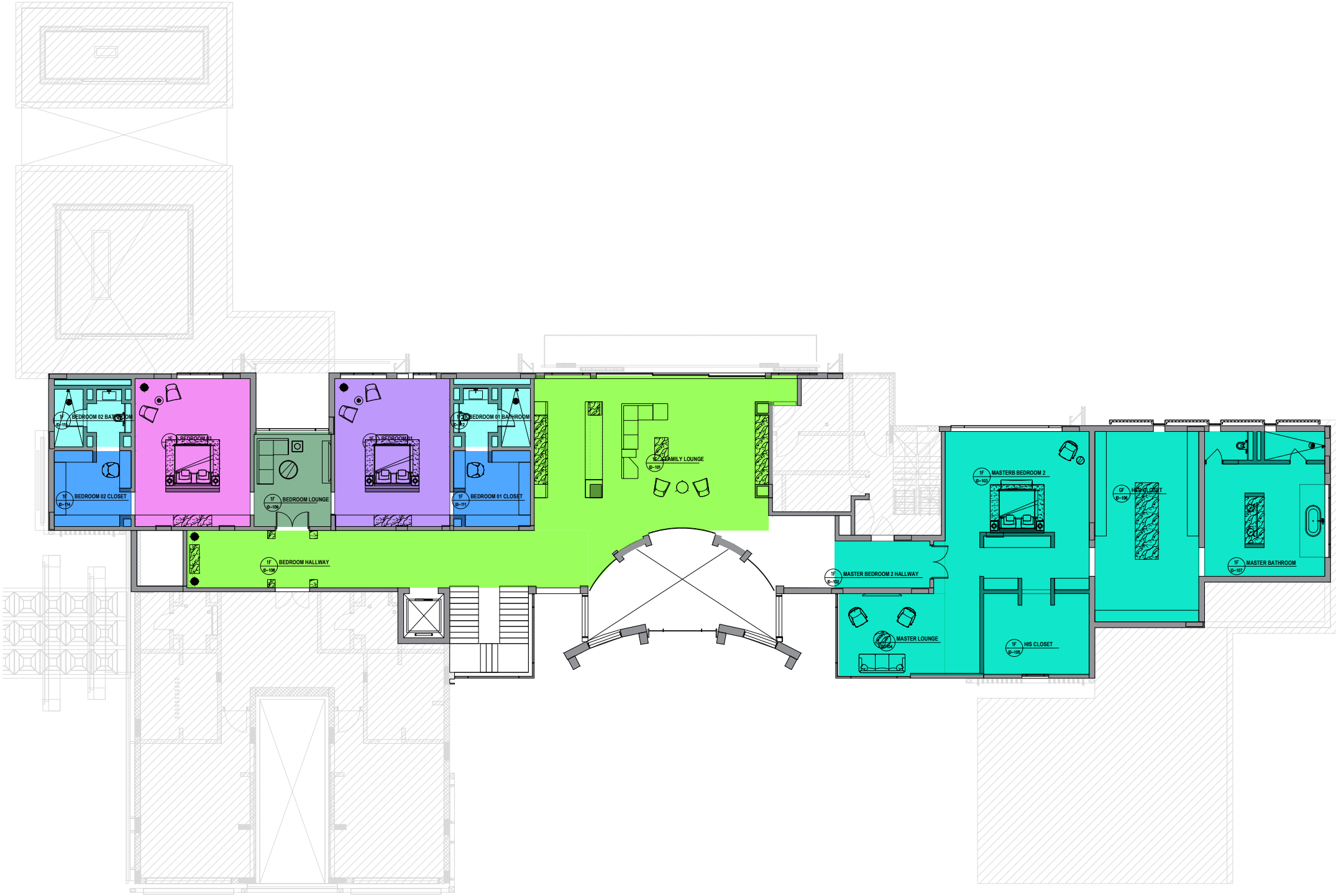


# A MODERN LUXURY LIVING.

One of the most important aspects of any villa is its overall design – in terms of architecture, landscaping, interior design, etc. – all of these forces combine to create The best luxury villas are certainly a sight to behold, with a distinct personality expressed in the structure's overall look, its surrounds, and the inside.



FIRST FLOOR LAYOUT



- MASTER BEDROOM**  
PAGE 57 - 64
- FAMILY LOUNGE**  
PAGE 65
- BEDROOM 1**  
PAGE 67 - 68
- BEDROOM LOUNGE**  
PAGE 69
- CLOSETS**  
PAGE 70 - 71
- WASHROOM & RESTROOM**  
PAGE 71
- BEDROOM 2**  
PAGE 72 - 73





Master Bedroom





Master Bedroom





Master Bedroom





Master Bedroom Seating Area







Master Bedroom Walk-in Closet





Master Bedroom Walk-in Closet

# LIVING A LIFESTYLE

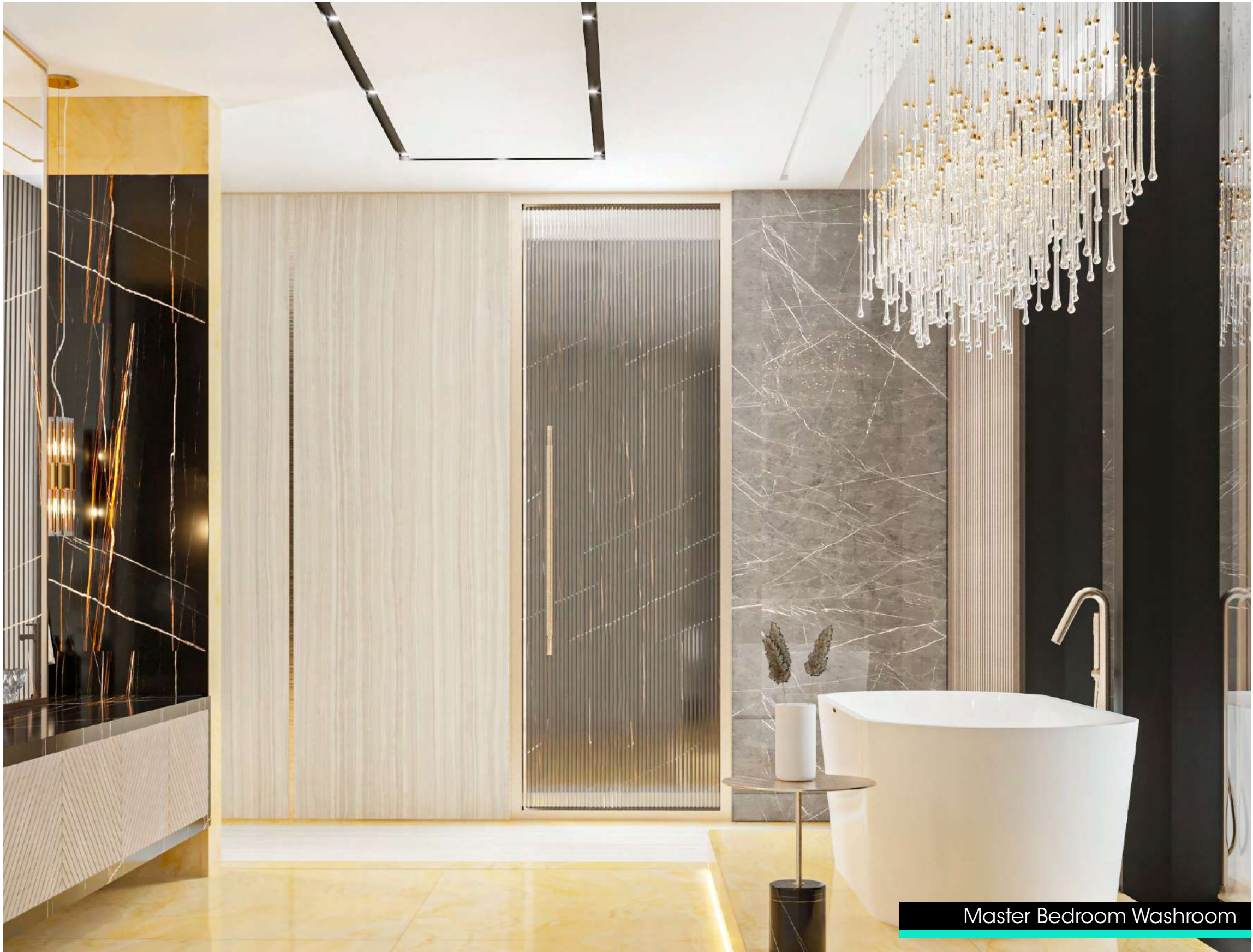
It's all about comforts and luxury living for wealthy households. Real luxury living combines the comforts of home with the amenities, elegance, and peace of mind of a hotel. True pleasure and fulfillment are what luxury is. It's the sensation you have when you wake up slowly in a cozy bed and take in your beautifully decorated space. Luxury is living in luxury. It's a place where you're constantly reminded to appreciate the lovely things in life.





Master Bedroom Washroom





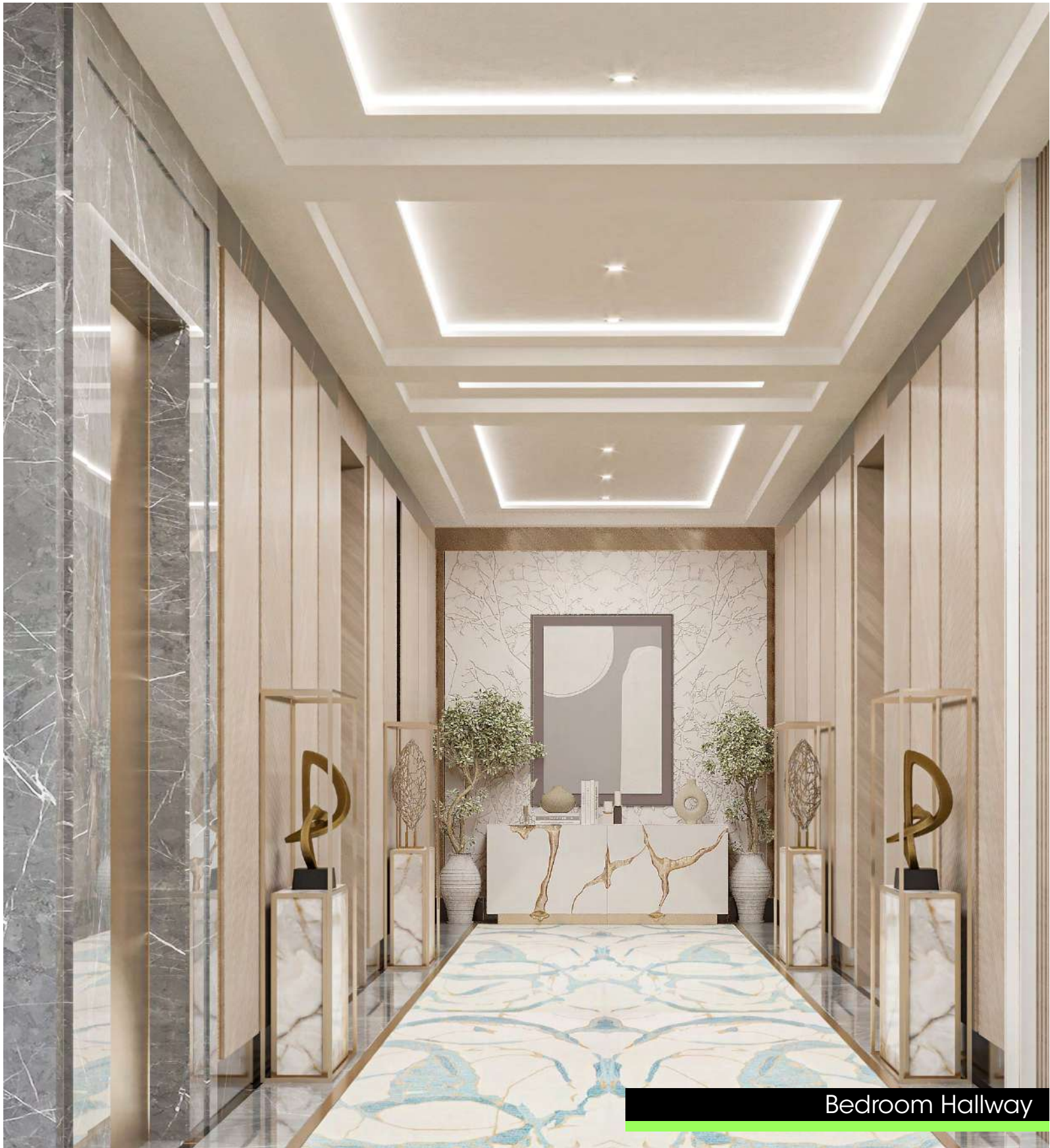
Master Bedroom Washroom



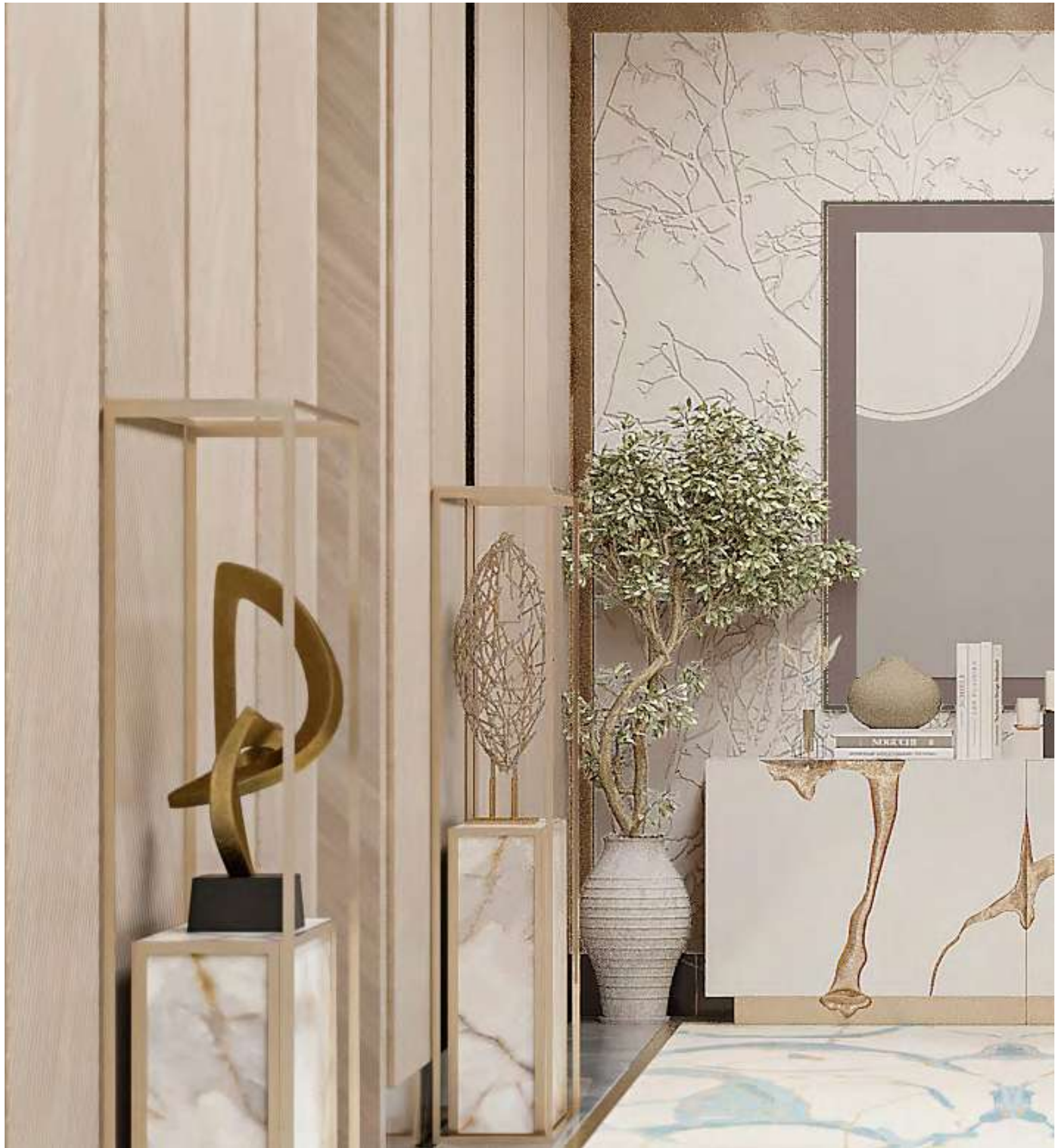


Family Lounge





Bedroom Hallway







Bedroom 1





Bedroom 1









Typical Bedrooms Closet





Typical Bedrooms Closet



Typical Bedrooms Restroom





Bedroom 2





Bedroom 2





SCAN ME

[sales@imaker-group.com](mailto:sales@imaker-group.com)

32 Marasi Drive, Business Bay  
Dubai, United Arab Emirates

[www.imaker-group.com](http://www.imaker-group.com)